

**Overview of Testing Results for Lead in Drinking Water  
and Corrective Actions for  
Joint Expeditionary Base Little Creek YC (Building 3085)**

The Navy is committed to maintaining safe drinking water on its installations. City water supplied to the Navy and the Navy's water distribution system is regularly tested and in compliance with the Safe Drinking Water Act. Because lead exposure is a particular concern for children, and lead may be added to drinking water through the pipes, fittings, solder, and fixtures inside a building, the Environmental Protection Agency (EPA) recommends, but does not mandate, that we test the lead content of drinking water in priority areas such as youth centers (YCs), child development group homes (CDGHs), and child development centers (CDCs). The Navy has adopted the recommendation as policy.

Navy environmental personnel conducted lead testing at the JEB Little Creek YC in accordance with Navy and EPA guidelines. Samples from various locations in the YC were sent to a state-certified laboratory for analysis.

At the JEB Little Creek YC, outlets used for drinking, cooking, and washing were tested. Out of **13** samples collected, no water outlets tested above the EPA-recommended screening level for lead in drinking water in schools and childcare centers of 20 parts per billion (ppb).

A copy of all test results is enclosed for your information. The test results are presented in two tables:

- Table 1 **Summary of Results** summarizes the data by category of use (e.g., drinking, cooking, washing).
- Table 2 **Summary Statistics** summarizes all the data.

A floor plan of the JEB Little Creek YC has also been included to show the locations of the fixtures that were sampled.

**Table 1** provides a description of each sampling location using three columns; *Category*, *Sampling ID*, and *Outlet Description*. The *Category* column gives information about whether the outlet is used for drinking water (water fountain), cooking (food preparation), or washing (primarily hand-washing or brushing teeth). The *Sample ID* column is the identification used to label each sample bottle. The *Outlet Description* column contains additional information to describe the outlet sampled under each category.

The next set of columns in **Table 1** provide *Initial Sampling Results*, and for those locations that exceeded the recommended screening level of 20 ppb the *Re-sampling Results*.

EPA sampling protocol requires water to not be used for between 8 and 18 hours prior to first draw sampling. Therefore, *Initial Sampling Results* were from first draw samples collected early in the morning before the YC opened and before any water was used. The *Initial Sampling Results* also indicate whether resampling is required and the date that fixtures greater than 20 ppb were secured.

The *Re-sampling Results*, *Corrective Actions*, and *Post Remediation Sampling Results* columns are annotated N/A (not applicable) since all the samples at the JEB Little Creek YC were within EPA recommended levels.

To learn more about lead in drinking water in schools and day care centers visit the following EPA website: <https://www.epa.gov/dwreginfo/lead-drinking-water-schools-and-child-care-facilities>.

To learn more about your home's public water supplier, see their annual water quality report: [https://www.cnic.navy.mil/regions/cnrma/om/environmental\\_support/water\\_quality\\_information.html](https://www.cnic.navy.mil/regions/cnrma/om/environmental_support/water_quality_information.html)

To answer any questions you may have on the sampling program contact the JEB Little Creek-Fort Story Public Affairs Officer at 757-462-8425. If you have any health questions or concerns, you are encouraged to contact your health care provider or, if you are a TRICARE beneficiary, use the Mid-Atlantic Appointment Center to schedule an appointment with your primary care provider at 1-866-645-4584.

Enclosures:

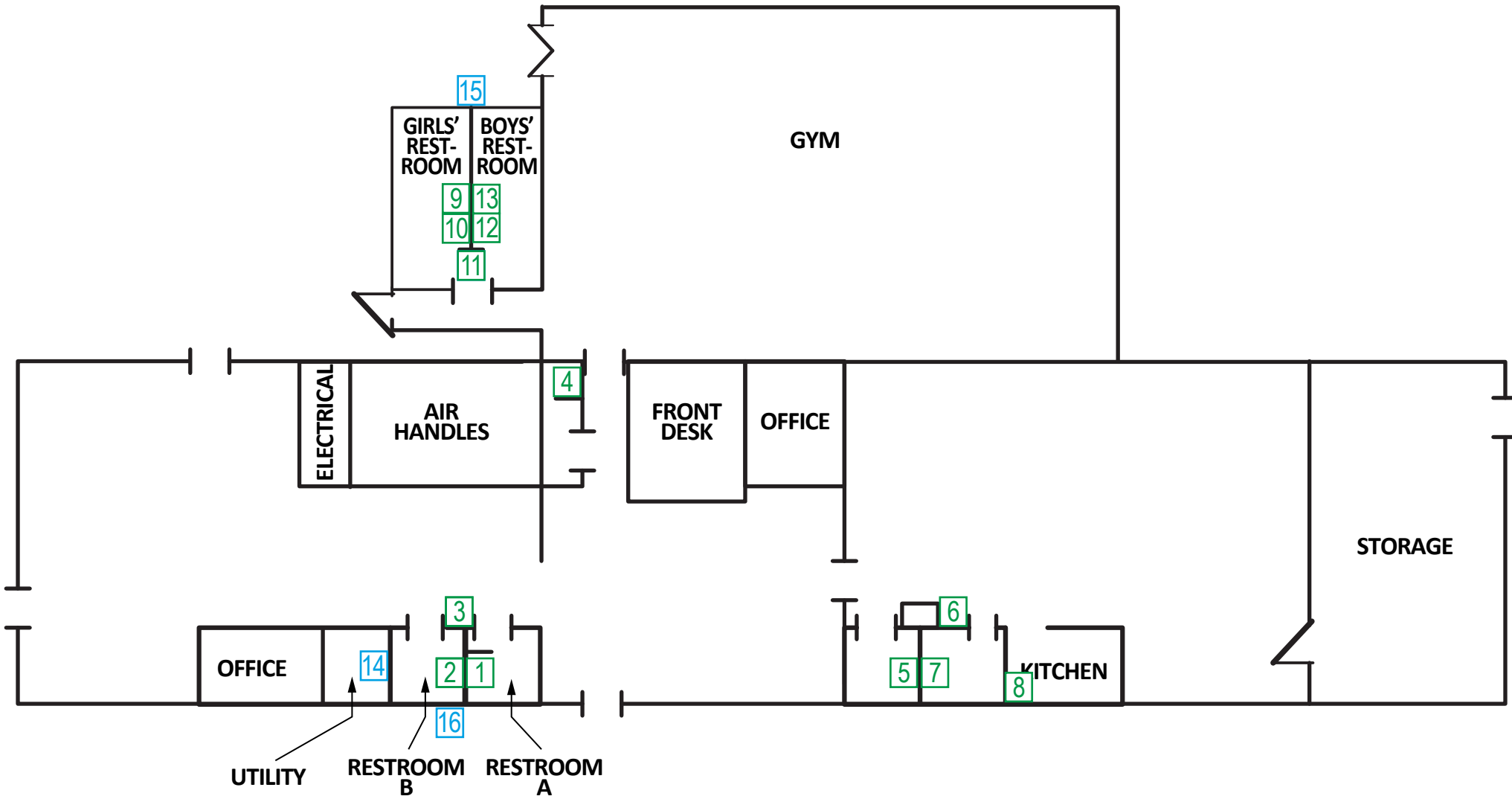
1. Complete Test Results
2. Floor Plan of the JEB Little Creek YC

Table 1. Summary of Results

SAMPLING LOCATION DESCRIPTION					INITIAL SAMPLING RESULTS			RE-SAMPLING RESULTS			CORRECTIVE ACTIONS	POST REMEDIATION SAMPLING	
CATEGORY	SAMPLE ID NO.	SAMPLE ID	Outlet Description	Comments	Lead Screening Level of 20ppb								
					First Draw (ppb)	Retest required?	Date Fixture Secured?	Water Fountain 15 min. Follow up Flush Sample - Collected day before First Draw Sampling (ppb)	First Draw (ppb)	Follow up Flush - Collected 30 seconds after First Draw Sampling (ppb)	Description	First Draw (ppb)	Follow up Flush - Collected 30 seconds after First Draw Sampling (ppb)
<b>SAMPLING DATE</b>					<b>9/29/2017</b>			<b>N/A</b>	<b>N/A</b>	<b>N/A</b>		<b>N/A</b>	
<b>RESULTS DATE</b>					<b>10/9/2017</b>			<b>N/A</b>	<b>N/A</b>	<b>N/A</b>		<b>N/A</b>	
DRINKING	3	JEBLC-3085-HALL-WFCA-FD	Water fountain cooler in Hallway		non-detect	No	N/A	N/A	N/A	N/A	N/A	N/A	N/A
DRINKING	6	JEBLC-3085-HALL-WFCB-FD	Water fountain cooler in Hallway		non-detect	No	N/A	N/A	N/A	N/A	N/A	N/A	N/A
DRINKING	11	JEBLC-3085-HALL-WFCC-FD	Water fountain cooler in Hallway		non-detect	No	N/A	N/A	N/A	N/A	N/A	N/A	N/A
COOKING	8	JEBLC-3085-K-K-FD	Kitchen sink faucet used for food preparation and dishwashing in the Kitchen		non-detect	No	N/A	N/A	N/A	N/A	N/A	N/A	N/A
WASHING	1	JEBLC-3085-BATHA-HHW-FD	High handwashing faucet in Restroom A		non-detect	No	N/A	N/A	N/A	N/A	N/A	N/A	N/A
WASHING	2	JEBLC-3085-BATHB-HHW-FD	High handwashing faucet in Restroom B		non-detect	No	N/A	N/A	N/A	N/A	N/A	N/A	N/A
WASHING	4	JEBLC-3085-LOUNGE-HHW-FD	High handwashing faucet in Staff Lounge		non-detect	No	N/A	N/A	N/A	N/A	N/A	N/A	N/A
WASHING	5	JEBLC-3085-BATHD-HHW-FD	High handwashing faucet in Restroom D		non-detect	No	N/A	N/A	N/A	N/A	N/A	N/A	N/A
WASHING	7	JEBLC-3085-BATHE-HHW-FD	High handwashing faucet in Restroom E		non-detect	No	N/A	N/A	N/A	N/A	N/A	N/A	N/A
WASHING	9	JEBLC-3085-BATHF-HHWA-FD	High handwashing faucet in Restroom F		non-detect	No	N/A	N/A	N/A	N/A	N/A	N/A	N/A
WASHING	10	JEBLC-3085-BATHF-HHWB-FD	High handwashing faucet in Restroom F		1	No	N/A	N/A	N/A	N/A	N/A	N/A	N/A
WASHING	12	JEBLC-3085-BATHG-HHWA-FD	High handwashing faucet in Restroom G		non-detect	No	N/A	N/A	N/A	N/A	N/A	N/A	N/A
WASHING	13	JEBLC-3085-BATHG-HHWB-FD	High handwashing faucet in Restroom G		non-detect	No	N/A	N/A	N/A	N/A	N/A	N/A	N/A

Table 2. Summary Statistics

CATEGORY	INITIAL SAMPLING RESULTS		RE-SAMPLING RESULTS			POST
	Lead Screening Level of 20ppb					
	First Draw (ppb)		Water Fountain Follow up Flush Sample - Collected day before First Draw Sampling (ppb)	First Draw (ppb)	Follow up Flush - Collected 30 seconds after First Draw Sampling (ppb)	First Draw (ppb)
Total Drinking	3		N/A	N/A	N/A	N/A
Total Drinking > 20 ppb	0		N/A	N/A	N/A	N/A
Total Cooking	1		N/A	N/A	N/A	N/A
Total Cooking > 20 ppb	0		N/A	N/A	N/A	N/A
Total Washing	9		N/A	N/A	N/A	N/A
Total Washing > 20 ppb	0		N/A	N/A	N/A	N/A
Total Samples	13		N/A	N/A	N/A	N/A
Total Samples > 20 ppb	0		N/A	N/A	N/A	N/A



1 BUILDING 3085 - FLOOR PLAN NOT TO SCALE



# Outlet numbers pertaining to the floor plan.  
 Red = Above 20 ppb  
 Green = Below 20 ppb  
 Blue = Not Sampled

No.	Type of Fixture	Location Description	Exceeded?
1	High hand washing faucet	Restroom A	No
2	High hand washing faucet	Restroom B	No
3	Water fountain cooler	Hallway	No
4	High hand washing faucet	Restroom C	No
5	High hand washing faucet	Restroom D	No
6	Water fountain cooler	Hallway	No
7	High hand washing faucet	Restroom E	No
8	Kitchen sink used for food preparation and dishwashing	Kitchen	No
9	High hand washing faucet	Girls› Restroom (Restroom F)	No
10	High hand washing faucet	Girls› Restroom (Restroom F)	No
11	Water fountain cooler	Hallway	No
12	High hand washing faucet	Boys› Restroom (Restroom G)	No
13	High hand washing faucet	Boys› Restroom (Restroom G)	No
14	Utility sink	Utility Room	Not sampled
15	Hose bib	Outside	Not sampled
16	Hose bib	Outside	Not sampled

# Outlet numbers pertaining to the floor plan.  
 Red = Above 20 ppb  
 Green = Below 20 ppb  
 Blue = Not Sampled